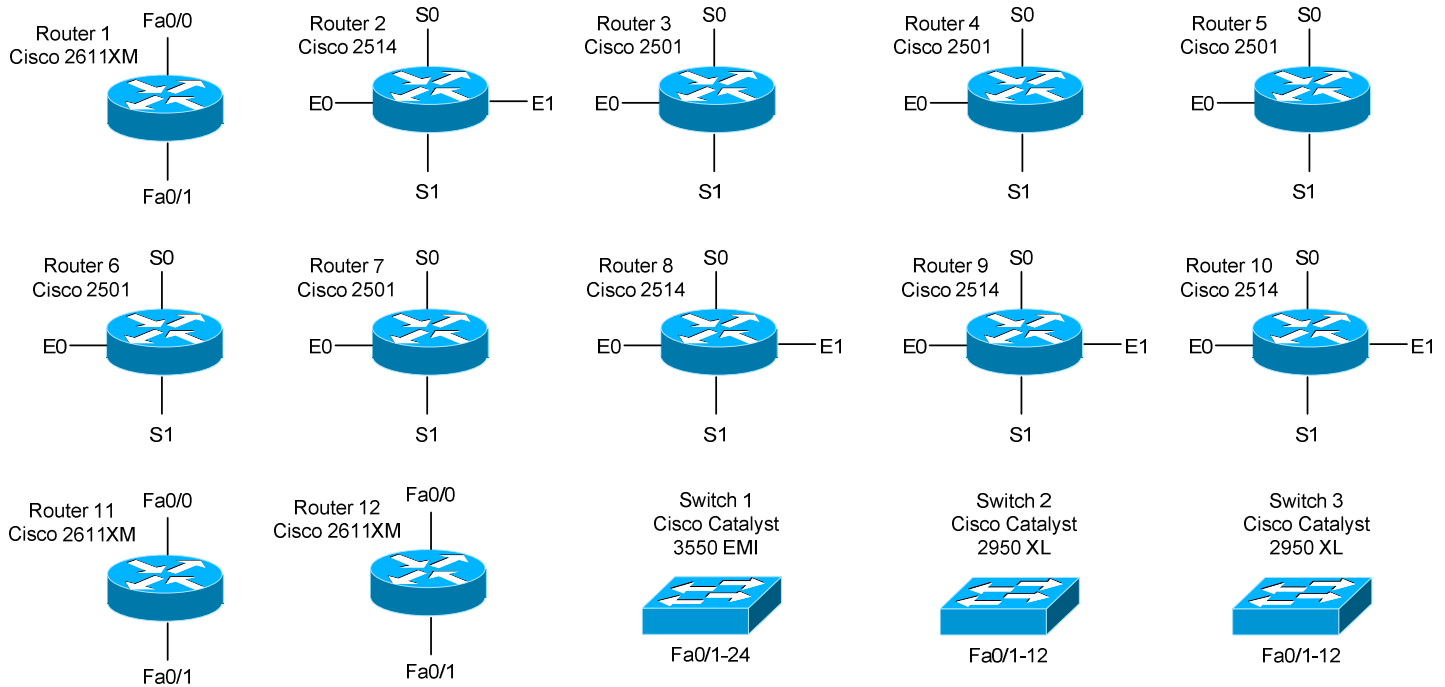


## - Lab Equipment -

This website (<http://www.routeralley.com>) contains several hands-on lab exercises. Each lab can contain up to twelve routers, one Layer 3 switch, and two Layer 2 switches.

The specific equipment used in each lab is as follows:



Thus, to fully replicate this lab environment, you'll need:

- Three Cisco 2611XM routers (two Fast Ethernet interfaces)
- Four Cisco 2514 routers (two Ethernet, two Serial interfaces)
- Five Cisco 2501 routers (one Ethernet, two Serial interfaces)
- One 24-port Cisco Catalyst 3550 switch with the EMI software
- Two 12-port Cisco Catalyst 2950 switches

The above equipment may be a bit expensive for the average home lab. Most of the lab exercises should still be functional if different (or less) equipment is used. Feel free to adjust the lab exercises to your own environment.

\*\*\*

All original material copyright © 2006 by Aaron Balchunas ([aaron@routeralley.com](mailto:aaron@routeralley.com)), unless otherwise noted. All other material copyright © of their respective owners.

This material may be copied and used freely, but may not be altered or sold without the expressed written consent of the owner of the above copyright. Updated material may be found at <http://www.routeralley.com>.